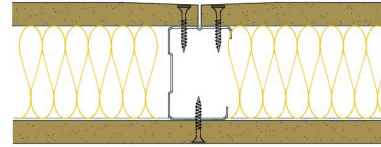


50-K-51(50) - SPEEDLINE System Data Sheet - Version V1 (24-10-23)

SPEEDLINE 50mm 'C' Stud Partition @600mm Ctrs,
with Knauf 12.5mm Wallboard each side, 50mm
APR



System Performance Breakdown

Fire Resistance:

BS476 Part 22:1987:

Test Ref & Date or Applied Ref & Report:

Max Height:

Thickness:

Duty Grade: BS 5234: Part 2:1992:

Sound Insulation:

30/30 Minutes (Integrity/Insulation).

BTC 17436F - BRE Report P102396-1011B

Refer to Speedline Specification Clause

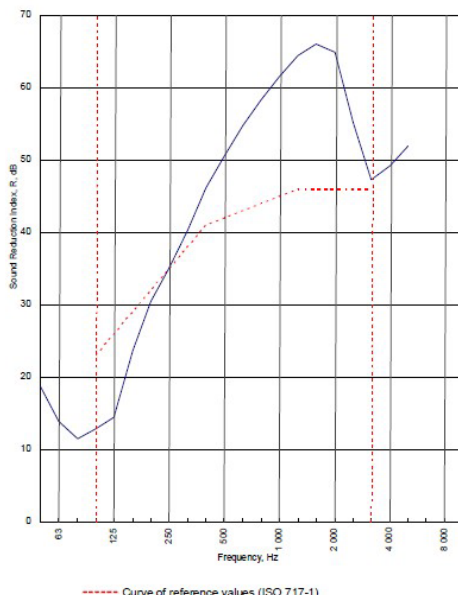
77 mm. (At Base Track, Excluding Finishes)

Medium - Annexes A-F

42 R_w dB, Date Tested or Assessed Against - 16/06/2011

Test Code:
H17386DA
Test Date:
16/06/2011

Freq. Hz	R dB
50	18.6
63	13.9
80	11.5
100	12.8
125	14.4
160	23.6
200	30.4
250	35.0
315	40.3
400	46.1
500	50.5
630	54.8
800	58.3
1 000	61.5
1 250	64.5
1 600	66.1
2 000	64.9
2 500	55.2
3 150	47.3
4 000	49.2
5 000	51.9
6 300	
8 000	
10 000	



Rating according to BS EN ISO 717-1:1997
 R_w (C;Ctr) = 42 (-5;-12) dB
 Max dev. 11.6 dB at 125 Hz
 Evaluation based on laboratory measurement results obtained by an engineering method:
 C_{50-150} = -6 dB C_{50-500} = -5 dB $C_{100-500}$ = -4 dB
 $C_{5-50-150}$ = -15 dB $C_{5-50-500}$ = -15 dB $C_{5-100-500}$ = -12 dB

TESTED AT ONE OF THE UKAS ACCREDITED LABORATORIES BELOW

B.T.C (H-Ref on Graph)

B.R.E

AIRO

S.R.L

Customer: Metsec plc Hepsec Division

BTC 17408A: Page 9 of 11

